

# Intuit Booth

Available at  
**pCon**  
PLANNER

Phonebooth  
Design: Iseasi



You need to make a call. But you'd rather the whole office didn't listen in. Booth provides a quiet oasis, so you can focus on your conversation, without distractions.

We saw an opportunity to make the basic phone booth a much more pleasant place to be. If you've spent time in cramped and claustrophobic phone booths before, you'll marvel at how Booth opens up the space. You can be part of the open-plan space, while still having access to the focus and privacy you need at various points of your day. And its rocking and rotating seat gives you room to move, without banging your elbows on the walls every 5 seconds.

Booth harnesses technology and design to provide an intuitive space for your special task. With sound absorbing upholstery and acoustic panels, Booth dampens noise from every direction. Its motion sensor fresh air ventilation system and adjustable LED lighting help you create exactly the environment you work well in. While its wheels mean you can relocate it to anywhere in your office.

## PRODUCT INFORMATION

**Acoustics**  
Sound absorption class A

**Movable**  
On four wheels underneath, floor adjusters are integrated for levelling

**Integrated ventilation**  
Airflow rate: when occupied 40l/s; stand-by mode, after 5 mins no occupancy 27 l/s

**Accessories**  
Bar height perch, 360° swivel and rocking

**Electrical outlet**  
Intergrated electrical outlet

**Warranty**  
5 years

**Sustainability**  
Based on principles of the circular economy

**Test & Certification**  
Sound absorption class B



## STANDARD MATERIALS

**Structure**  
High-quality plywood, painted black

**Outside**  
Soft upholstered panels covered with any felt fabric

**Inside**  
Ceiling and wall panels covered with certified acoustic and fire-retardant felt and fabric

**Floor**  
Carpet tile in a fishbone pattern

**Glass door and back wall**  
442 laminated and tempered clear glass with sound control PVB interlayer

**Bar height perch**  
Durable HR-foam, fabric; powder-coated matt metal legs; tilting base

**Fabric upholstery**  
Choose any felt from **Intuit Standard felt selection**

**Additional information**  
As part of after-sales service we offer the change of cover fabric and all other components if needed

Utilitas Wind office in Tallinn, Estonia. Photo: Märt Lillesiim



Concentration Zone

Enjoy a room that feels bigger on the inside

Find the peace you need

Take calls without disturbing your team





INSIDE COVER MATERIALS

Walls

Pressed felt

Dark Grey

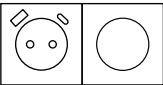
Other finishing options available on request.

Floor

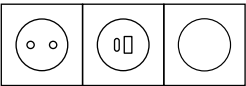
Carpet tile

Grey

ELECTRICAL OUTLET



220V + USB A & C + Dimmer



220V + USB A & C + Dimmer

Jung LS

Color: Anthracite Matt

Available options EU, FR

Jung LS

Color: Anthracite Matt

Available options UK

Gira

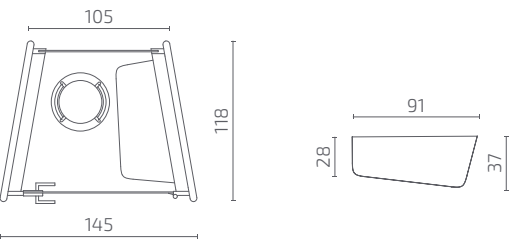
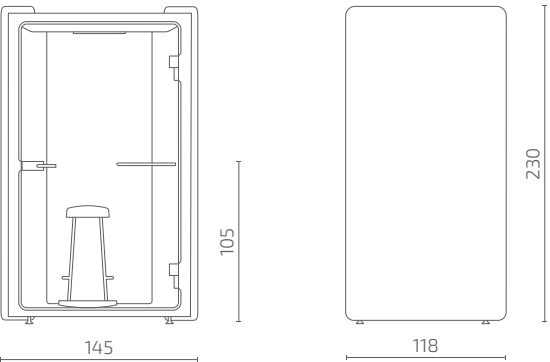
Color: Anthracite Matt

Available options DK

Other electrical outlet combinations available on request.

DIMENSIONS

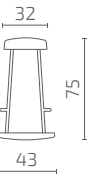
Phonebooth



S122-B00TH1

All dimensions provided in centimetres.

Bar height perch

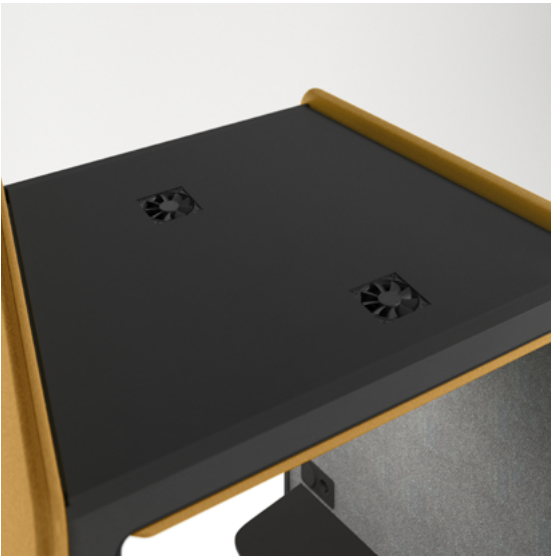


S122-BFL1

More Space

Booth's trapezoid shape is especially designed to feel spacious. It enables you to choose different positions. Its wide glass panels help you feel part of your wider surroundings, without being disturbed by them. And make the whole booth full of light. You can swing and turn on your chair, adapting your setup to whatever you need to work on.

Utilitas Wind office in Tallinn, Estonia. Photo: Märt Lillesiim



PRICE LIST

Currency: € (VAT excl.)

PRODUCT NAME	CODE	FABRIC 2
BOOTH phonebooth	S122-B00TH1	11570
BOOTH perch	S122-BFL1	635

